



ENERGY
INDUSTRIAL COMPANY



SOUND ATTENUATORS

Rectangular Splitters
Model SAT-20

Rectangular Sound Attenuator

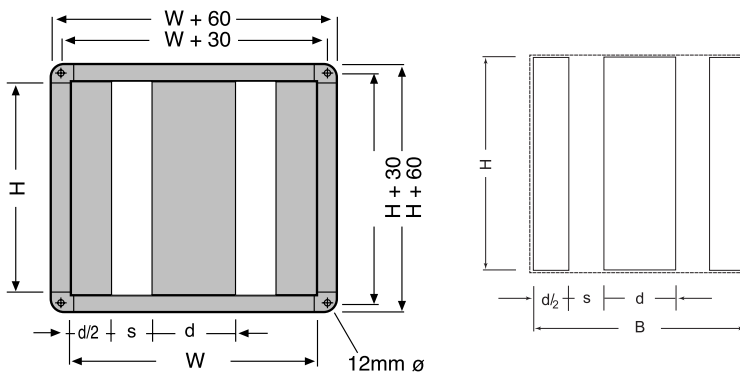
Sound Attenuators Features

- Leakage DW142 Class B
- SAL metal flanges standard, Metz type optional
- High acoustics performance
- Advanced design with asymmetric splitters
- Vermin proof, rot proof and non-hygroscopic in fill
- Aerodynamic bull-nosed splitters
- High performance in fill with or without perforated metal facing (D)
- Pre-galvanized sheet steel casing

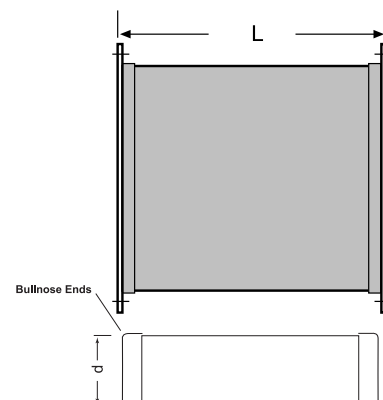
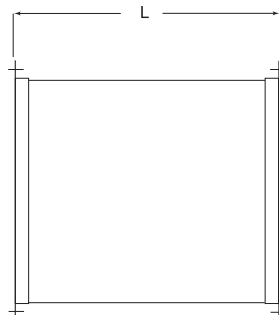
Acoustic Infill

This material is inert, non-hygroscopic, vermin proof and rot proof, does not support bacteriological growth and has a Class 1 rating for surface spread of flame as measured to BS 476 Part 7, 1971). It is further guaranteed against surface erosion up to air velocities of 30m/sec.

Splitter Type SAT



Corner holes



Paint Finish

Electrostatic Polyester Powder Paint finish is available in a range of RAL colors. This is a very durable finish now accepted within the industry as offering the best option for pre-galvanized sheet steel.

Construction

Type SAT attenuators are manufactured from galvanized sheet metal 0.9 mm thick to BS2989 Grade Z2 G275. Casings are formed with either stand-up or lock formed seams with mastic sealants.

- All units have slide on flanges.
- The splitters are in compliance with Class O building regulations. The in fill has a Black Glass Tissue facing.
- The units can withstand velocities up to 20m/s. An additional perforated sheet cover can be provided if velocity increases above 15m/s. This perforation can withstand 30m/s velocity without erosion or damage to fibers.
- SAT Attenuators are supplied in sections when any of the dimensions are exceeded $B=2100\text{mm}$ $H=1800\text{mm}$ $L=2100\text{mm}$.
- The assembly of sectionalized attenuators is on site, by others. At the order stage full details of attenuator configuration are provided.
- All attenuators will have a half splitter on the sides to prevent flanking of the casing.
- Casings conform with DW142 Class B duct work code.

Rectangular Splitters Model SAT-20



Weight of Attenuators									
Width B in mm	SAT20-75	275	550	825	1100	1325	1650	1925	
	SAT20-100	300	600	900	1200	1500	1800	2100	
	SAT20-150	350	700	1050	1400	1750	2100	-	-
	SAT20-200	400	800	1200	1600	2000	-	-	-
Number of modules		1	2	3	4	5	6	7	
Length L in mm	Height H in mm	Weight, kg ± 10%							
600	300	16	26	36	46	56	64	70	
	600	23	36	49	62	75	87	95	
	900	30	46	62	78	94	110	120	
	1200	37	56	75	93	113	132	145	
	1500	-	66	82	110	131	153	169	
	1800	-	-	106	132	159	185	205	
900	300	22	36	49	63	77	90	98	
	600	31	49	66	84	102	119	130	
	900	41	63	84	106	128	150	164	
	1200	50	76	101	127	153	179	197	
	1500	-	90	116	148	178	207	229	
	1800	-	-	144	180	216	252	280	
1200	300	26	44	61	79	97	115	123	
	600	38	60	82	104	127	149	162	
	900	50	78	106	133	161	189	207	
	1200	63	95	127	160	192	225	248	
	1500	-	113	149	186	224	261	289	
	1800	-	-	182	227	273	319	355	
1500	300	30	51	72	92	113	134	144	
	600	44	70	96	121	147	173	188	
	900	58	90	122	154	186	218	239	
	1200	72	110	147	185	222	259	286	
	1500	-	130	172	215	258	301	333	
	1800	-	-	210	262	315	368	409	
1800	300	42	70	95	122	150	176	193	
	600	60	96	130	165	201	235	256	
	900	80	124	166	208	252	297	325	
	1200	98	150	199	250	301	355	390	
	1500	-	178	230	293	351	411	454	
	1800	-	-	284	355	427	500	554	
2100	300	46	78	108	140	172	203	219	
	600	67	107	146	186	227	265	290	
	900	89	138	187	236	286	335	365	
	1200	110	167	225	284	340	400	440	
	1500	-	200	261	330	398	464	513	
	1800	-	-	322	401	485	565	629	

Rectangular Splitters Model SAT-20

Attenuator Performance

SAT- Attenuator's performance is derived from tests meeting the requirements of BS 4718 - 1971. No deviations were recorded over the range of velocities employed in this catalog. Maximum permissible face velocities are given below.

Required Space Noise Levels NC	Maximum Permissible Face Velocity V_f m/s			
	Attenuator Type			
	SAT 20-75	SAT20-100	SAT20-150	SAT20-200
25	2.4	3.2	3.9	5.0
30	3.2	4.2	5.5	6.2
35	3.8	5.0	6.7	7.4
40	4.6	5.7	7.7	8.9
45	5.4	6.6	8.6	10.4
50	6.2	7.6	9.7	11.6



Recommended Design Criteria for Various Area Function (According to ASHRAE)

Type of Ventilation Space	Space NC
Bedrooms in private homes, live theater (500 seats). cathedrals and large churches, television studios, large conference rooms and lecture rooms (,50 people).	25
Living rooms, board rooms, top management offices, conference and lecture rooms, multi-purpose halls, churches, libraries, hotel bedrooms, banquet rooms, operating theaters, cinemas.	30
Public rooms in hotels, ballrooms, school classrooms, small court rooms, museums, libraries, banking halls, small restaurants, cocktail bars.	35
Toilets and washrooms, large open offices, drawing offices, reception area (office), halls, corridors, hotel lobbies, hospitals, bars and night clubs, shops, gymnasiums	40
Hotel kitchens, hospitals, laundry rooms, computer rooms, cafeteria, canteen, supermarket, swimming pools, covered garages, car parks, bowling alleys	45

Rectangular Splitters Model SAT-20



Attenuator Quick Selection Chart

		Type of Ventilated Area Being Serviced by Low Velocity Systems Utilizing DW 142 Class A or B Duct work								
		Rooms with Average Furnishings: Carpeted Floor, Including:			Rooms with Limited Furnishings: Mainly Hard Surfaces, Including:			Rooms with Soft Furnishings Including:		
		Offices, Banks, Libraries, Lecture Rooms, Restaurants, Department Stores			Hospital Areas, Supermarkets, Computer Rooms, Laboratories, Cafes, Dance Halls, Museums, Canteens, Toilets			Kitchens, Swimming Pools, Sports Halls, Covered Garages, Warehouses		
Fan Static Pressure		250Pa	500Pa	1000Pa	250Pa	500Pa	1000Pa	250Pa	500Pa	1000Pa
Criterion	Type	Attenuator Length in mm			Attenuator Length in mm			Attenuator Length in mm		
NC 45	SAT20-100	900	900	900	900	900	1200	900	1200	1500
	SAT20-150	900	1200	1200	1200	1500	1800	1500	1800	2100
NC 40	SAT20-100	900	900	1200	1200	1200	1500	1200	1500	1500
	SAT20-150	1200	1500	1800	1500	1800	2100	1800	2100	2100
NC 35	SAT20-100	1200	1200	1500	1500	1500	1800	1500	1800	1800
	SAT20-150	1500	1800	2100	1800	2100	2400	1800	2100	2400

High Velocity CV/VAV Systems Incorporating Terminal Units and Utilizing DW 142 Class C Duct work		
Fan Static Pressure		2000Pa
Criterion	Type	Attenuator Length in mm
NC 45	SAT20-100	1200
	SAT20-150	1800
NC 40	SAT20-100	1500
	SAT20-150	2100
NC 35	SAT20-100	1800
	SAT20-150	2400

Rectangular Splitters Model SAT-20/75



Cross Section Sizing

Pressure Loss Δp , Pa		15	25	35	50	60	75	85	100	110	125
Face Velocity v_t m/s		1.6	2.1	2.4	2.9	3.2	3.5	3.8	4.0	4.3	4.6
Attenuator self noiseguide against face velocity v_t		NC 25			NC 30			NC 35			NC 40
Width (mm)	Height (mm)	Volume Flow Rate V l/s									
275 ONE MODULE	150	65	85	100	120	130	145	155	165	175	190
	300	130	170	200	240	260	290	310	330	350	380
	450	200	260	300	360	400	430	470	500	530	570
	600	260	350	400	480	530	580	630	660	710	760
	750	330	430	500	600	660	720	780	830	890	950
550 TWO MODULES	900	400	520	590	720	790	870	940	990	1060	1140
	300	260	350	400	480	530	580	630	660	710	760
	450	400	520	590	720	790	870	940	990	1060	1140
	600	530	690	790	960	1060	1160	1250	1320	1420	1520
	750	660	870	990	1200	1320	1440	1570	1650	1770	1900
825 THREE MODULES	900	790	1040	1190	1440	1580	1730	1880	1980	2130	2280
	1050	1390	1820	2080	2510	2770	3030	3290	3470	3720	3980
	1200	1580	2080	2380	2870	3170	3470	3760	3960	4260	4550
	450	590	780	890	1080	1190	1300	1410	1490	1600	1710
	600	790	1040	1190	1440	1580	1730	1880	1980	2130	2280
1100 FOUR MODULES	750	990	1300	1490	1790	1980	2170	2350	2480	2660	2850
	900	1190	1560	1780	2150	2380	2600	2820	2970	3190	3420
	1050	1390	1820	2080	2510	2770	3030	3290	3470	3720	3980
	1200	1580	2080	2380	2870	3170	3470	3760	3960	4260	4550
	1350	2380	3120	3560	4310	4750	5200	5640	5940	6390	6830
1375 FIVE MODULES	600	1060	1390	1580	1910	2110	2310	2510	2640	2840	3040
	750	1320	1730	1980	2390	2640	2890	3140	3300	3550	3800
	900	1580	2080	2380	2870	3170	3470	3760	3960	4260	4550
	1050	1850	2430	2770	3350	3700	4040	4390	4620	4970	5310
	1200	2110	2770	3170	3830	4220	4620	5020	5280	5680	6070
1650 SIX MODULES	1350	2380	3120	3560	4310	4750	5200	5640	5940	6390	6830
	900	2380	3120	3560	4310	4750	5200	5640	5940	6390	6830
	1050	2770	3640	4160	5020	5540	6060	6590	6930	7450	7970
	1200	3170	4160	4750	5740	6340	6930	7520	7920	8510	9110
	1350	3560	4680	5350	6460	7130	7800	8460	8910	9580	10250
1925 SEVEN MODULES	1500	3960	5200	5940	7180	7920	8660	9400	9900	10640	11390
	1650	4360	5720	6530	7900	8710	9530	10350	10890	11710	12520
	1800	4750	6240	7130	8610	9500	10400	11290	11880	12770	13660
	1050	3230	4240	4850	5860	6470	7070	760	8090	8690	9300
	1200	3700	4850	5540	6700	7390	8090	8780	9240	9930	10630
2200 EIGHT MODULES	1350	4160	5460	6240	7540	8320	9100	9880	10400	11170	11950
	1500	4620	6060	6930	8370	9240	10110	10970	11550	12420	13280
	1650	5080	6670	7620	9210	10160	11120	12070	12700	13660	14610
	1800	5540	7280	8320	10050	11090	12130	13170	13860	14900	15940
	1950	6010	7880	9010	10890	12010	13140	14260	15020	16140	17270
2475 NINE MODULES	2100	6470	8490	9700	11720	12940	14150	15360	16170	17380	18600
	1200	4220	5540	6340	7660	8450	9240	10030	10560	11350	12140
	1350	4750	6240	7130	8610	9500	10400	11290	11880	12770	13660
	1500	5280	6930	7920	9570	10560	11550	12540	13200	14190	15180
	1650	5810	7620	8710	10530	11620	12710	13790	14520	15610	16700
2750 TEN MODULES	1800	6340	8320	950	11480	12670	13860	15050	15840	17030	18220
	1950	6860	9010	10300	12440	13730	15020	16300	17160	18450	19730
	2100	7390	9700	11090	13500	14780	16170	17560	18480	19870	21250
	2250	7920	10400	11880	14360	15840	17330	18810	19800	21290	22770
	1350	5350	7020	8020	9690	10690	11660	12700	13370	14370	15370
1500	5940	7800	8910	10770	11880	12990	14110	14850	15960	17080	
1650	6530	8580	9800	11840	13070	14290	15520	16330	17560	18790	
1800	7130	9360	10690	12920	14260	15590	16930	17820	19160	20490	
1950	7720	10140	11580	14000	15440	16890	18340	19300	20750	22200	
2100	8320	10910	12470	15070	16630	18190	19750	20790	22350	23910	
2250	8910	11690	13370	16150	17820	19490	21160	22280	23950	25620	
2400	9500	12470	14260	17230	19010	20790	22570	23760	25540	27320	

The pressure loss data above relates to a straight attenuator 1200mm long. The following factors are applicable to other lengths:

Length L in mm	600	900	1200	1500	1800	2100	2400
Δp factor	x 0.90	x0.95	0	x1.05	x1.10	x1.15	x1.20

For splitter bend attenuators add 35% to the pressure loss for the straight attenuator.

Rectangular Splitters Model SAT-20/100

Cross Section Sizing

Pressure Loss Δp , Pa		15	25	35	50	60	75	85	100	110	125
Face Velocity v_f m/s		2.1	2.7	3.2	3.8	4.2	4.7	5.0	5.4	5.7	6.0
Attenuator self noise guide against face velocity v_f		NC 25		NC 30		NC 35		NC 40			
Width (mm)	Height (mm)	Volume Flow Rate V l/s									
ONE MODULE	300	95	120	145	170	190	210	225	245	255	270
	300	190	240	290	340	380	420	450	490	510	540
	450	280	360	430	510	570	630	680	730	770	810
	600	380	490	580	680	760	850	900	970	1030	1080
	750	470	610	720	860	950	1060	1130	1220	1280	1350
TWO MODULES	900	570	730	860	1030	1130	1270	1350	1460	1540	1620
	300	380	490	580	680	760	850	900	970	1030	1080
	450	570	730	860	1030	1130	1270	1350	1460	1540	1620
	600	760	970	1150	1370	1510	1690	1800	1940	2050	2160
	750	950	1200	1440	1710	1890	2120	2250	2430	2570	2700
THREE MODULES	900	1130	1460	1730	2050	2270	2540	2700	2920	3080	3240
	1050	1320	1700	2020	2390	2650	2960	3150	3400	3590	3780
	1200	1510	1940	2300	2740	3020	3380	3600	3830	4100	4320
	450	850	1090	1300	1540	1700	1900	2030	2190	2310	2430
	600	1130	1460	1730	2050	2270	2540	2700	2920	3080	3240
FOUR MODULES	750	1420	1820	2160	2570	2840	3170	3380	3650	3850	4050
	900	1700	2190	2590	3080	3400	3810	4050	4370	4620	4860
	1050	1990	2550	3020	3590	3970	4440	4730	5100	5390	5670
	1200	2270	2920	3460	4100	4540	5080	5400	5830	6160	6480
	1350	2550	3280	3890	4620	5100	5710	6080	6560	6930	7290
FIVE MODULES	600	1510	1940	2300	2740	3020	3380	3600	3830	4100	4320
	750	1890	2430	2880	3420	3780	4230	4500	4860	5130	5400
	900	2270	2920	3460	4100	4540	5080	5400	5830	6160	6480
	1050	2650	3400	4030	4790	5290	5920	6300	6800	7180	7560
	1200	3020	3890	4610	5470	6050	6790	7200	7780	8210	8640
SIX MODULES	1350	3400	4370	5180	6160	6800	7610	8100	8750	9230	9720
	1500	3780	4860	5760	6840	7560	8560	900	9720	10260	10800
	750	2360	3040	3600	4280	4730	5290	5630	6080	6410	6750
	900	2840	3650	4320	5130	5670	6350	6750	7290	7700	8100
	1050	3310	4250	5040	5990	6620	7400	7880	8510	8980	9450
SEVEN MODULES	1200	3780	4860	5760	6840	7560	8460	9000	9720	10260	10800
	1350	4250	5470	6480	7700	8510	9520	10130	10940	11540	12150
	1500	4730	6080	7200	8550	9450	10580	11250	12150	12830	13500
	1650	5200	6680	7920	9410	10400	11630	12380	13370	14110	14850
	1800	5670	7290	8640	10260	11340	12690	13500	14580	15390	16200
EIGHT MODULES	900	3400	4370	5180	6160	6800	7610	8100	8750	9230	9720
	1050	3970	5100	6050	7180	7940	8880	9450	10210	10770	11340
	1200	4540	5830	6910	8210	9070	10150	10800	11660	12310	12960
	1350	5100	6560	7780	9230	10210	11420	12150	13120	13850	14580
	1500	5670	7290	8640	10260	11340	12690	13500	14580	15390	16200
NINE MODULES	1650	6240	8020	9500	11290	12470	13960	14850	16040	16930	17820
	1800	6800	8750	10370	12310	13610	15230	16200	17500	18740	19440
	1950	7370	9480	11230	13340	14740	16500	17550	18950	20010	21060
	1050	4630	5950	7060	8380	9260	10360	11030	11910	12570	13230
	1200	5290	6800	8060	9580	10580	11840	12600	13610	14360	15120
2400	1350	5950	7650	9070	10770	11910	13230	14180	15310	16160	17010
	1500	6620	8510	10080	11970	13230	14810	15750	17010	17960	18900
	1650	7280	9360	11090	13170	14550	16290	17330	18710	19750	20790
	1800	7940	10210	12100	14360	15880	17770	18900	20410	21550	22680
	1950	8600	11060	13100	15560	17200	19250	20480	22110	23340	24570
2700	2100	9260	11910	14110	16760	18520	20730	22050	23810	25140	26460
	2250	9920	12760	15120	17960	19850	22210	23630	25520	26930	28350
	1200	6050	7780	9220	10940	12100	13540	1440	15550	16440	17280
	1350	6800	8750	10370	12310	13610	15230	16200	17500	18470	19440
	1500	7560	9720	11520	13680	15120	16920	18000	19440	20520	21600
NINE MODULES	1650	8320	10690	12670	15050	16630	18610	19800	21380	22570	23760
	1800	9070	11670	13820	16420	18140	20300	21600	23330	24620	25920
	1950	9830	12640	14980	17780	19660	22000	23400	25270	26680	28080
	2100	10580	13610	16130	19150	21170	23690	25200	27220	28730	30240
	2250	11340	14580	17280	20520	22680	25380	27000	29160	30780	32400
2400	12100	15560	18430	21890	24190	27070	28800	31100	32830	34560	

The pressure loss data above relates to a straight attenuator 1200mm long. The following factors are applicable to other lengths:

Length L in mm	600	900	1200	1500	1800	2100	2400
Δp factor	x 0.90	x0.95	0	x1.05	x1.10	x1.15	x1.20

For splitter bend attenuators add 40% to the pressure loss for the straight attenuator.

Rectangular Splitters Model SAT-20/150



Cross Section Sizing

Pressure Loss Δp , Pa		15	25	35	50	60	75	85	100	110	125
Face Velocity v_f m/s		3.0	3.9	4.6	5.5	6.0	6.7	7.1	7.7	8.1	8.6
Attenuator self noise guide against face velocity v_f		NC 25		NC 30		NC 35		NC 40		NC 45	
Width (mm)	Height (mm)	Volume Flow Rate V l/s									
350 ONE MODULE	150	160	205	240	290	315	350	375	405	425	450
	300	320	410	480	580	630	700	750	810	850	900
	450	470	610	720	870	950	1060	1120	1210	1280	1350
	600	630	820	970	1160	1260	1410	1490	1620	1700	1810
	750	790	1020	1210	1440	1580	1760	1860	2020	2130	2260
	900	950	1230	1450	1730	1890	2110	2240	2430	2550	2710
700 TWO MODULES	450	950	1230	1450	1730	1890	2110	2240	2430	2550	2710
	600	1260	1640	1930	2310	2520	2810	2980	3230	3400	3610
	750	1580	2050	2420	2890	3150	3520	3720	4040	4250	4520
	900	1890	2460	2900	3470	3780	4220	4470	4850	5100	5420
	1050	2210	2870	3380	4040	4410	4920	5220	5660	5950	6320
	1200	2520	3280	3860	4620	5040	5630	5960	6470	6800	7220
1050 THREE MODULES	600	1890	2460	2900	3470	3780	4220	4470	4850	5100	5420
	750	2360	3070	3620	4330	4730	5280	5590	6060	6380	6770
	900	2840	3690	4350	5200	5670	6330	6710	7280	7650	8130
	1050	3310	4300	5070	6060	6620	7390	7830	8490	8930	9480
	1200	3780	4910	5800	6930	7560	8440	8950	9700	10210	10840
	1350	4250	5530	6520	7800	8510	9500	10060	10910	11480	12190
1400 FOUR	1500	4730	6140	7240	8660	9450	10550	11180	12130	12760	13550
	750	3150	4090	4830	5780	6300	7040	7460	8090	8510	9030
	900	3780	4910	5800	6930	7560	8440	8950	9700	10210	10840
	1050	4410	5730	6760	8090	8820	9850	10440	11320	11910	12640
	1200	5040	6550	7730	9240	10080	11260	11930	12940	13610	14450
	1350	5670	7370	8690	10400	11340	12660	13420	14550	15310	16250
1750 FIVE MODULES	1500	6300	8190	9660	11550	12600	14070	14910	16170	17010	18060
	1650	6930	9010	10630	12710	13860	15480	16400	17790	18710	19870
	1800	7560	9830	11590	13860	15120	16880	17890	19400	20410	21670
	900	4730	6140	7240	8660	9450	10550	11180	12130	12760	13550
	1050	5510	7170	8450	10110	11030	12310	13050	14150	14880	15800
	1200	6300	8190	9660	11550	12600	14070	14910	16170	17010	18060
2100 SIX MODULES	1350	7090	9290	10870	12990	14180	15830	16770	18190	19140	20320
	1500	7880	10240	12080	14440	15750	17590	18640	20210	21260	22580
	1650	8660	11260	13280	15880	17330	19350	20500	22230	23390	24830
	1800	9450	12290	14490	17330	18900	21110	22370	24260	25520	27090
	1950	10240	13310	15700	18770	20480	22860	24230	26280	27640	29350
	2100	11030	14330	16910	20210	22050	24620	26090	28300	29770	31610
	1050	6620	8600	10140	12130	13230	14770	15660	16980	17860	18960
2450 SEVEN MODULES	1200	7560	9830	11590	13860	15120	16880	17890	19400	20410	21670
	1350	8510	11060	13040	15590	17010	19000	20130	21830	22960	24380
	1500	9450	12290	14490	17330	18900	21110	22370	24260	25520	27090
	1650	10400	13510	15940	19060	20790	23220	24600	26680	28070	29800
	1800	11340	14740	17390	20790	22680	25330	26840	29110	30620	32510
	1950	12290	15970	18840	22520	24510	27440	29070	31530	33170	35200
	2100	13230	17200	20290	24260	26460	29550	31310	33960	35700	37900
	2250	14180	18430	21740	25990	28350	31660	33550	36380	38270	40640
2800 EIGHT MODULES	1200	8820	11470	13520	16170	17640	19700	20870	22640	23810	25280
	1350	9920	12800	15210	18190	19850	22160	23480	25470	26790	28440
	1500	11030	14330	16910	20210	22050	24620	26090	28300	29770	31610
	1650	12130	15770	18600	22230	24260	27080	28700	31130	32740	34770
	1800	13230	17200	20290	24260	26460	29550	31310	33960	35700	37900
	1950	14330	18630	21980	26280	28670	32000	33940	36800	38700	41100
	2100	15440	20070	23670	28300	30870	34470	36500	39600	41700	44300
	2250	16540	21500	25360	30320	33080	36900	39100	42500	44600	47400
	2400	17640	22930	27050	32340	35300	39400	41700	45300	47600	50500

The pressure loss data above relates to a straight attenuator 1200mm long. The following factors are applicable to other lengths:

Length L in mm	600	900	1200	1500	1800	2100	2400
Δp factor	x 0.90	x 0.95	0	x 1.05	x 1.10	x 1.15	x 1.20

For splitter bend attenuators add 50% to the pressure loss for the straight attenuator.

Rectangular Splitters Model SAT-20/200



Cross Section Sizing

Pressure Loss Δp , Pa		15	25	35	50	60	75	85	100	110	125
Face Velocity v_f m/s		4.0	5.0	6.2	7.4	8.0	8.9	9.6	10.4	11.0	11.6
Attenuator self noiseguide against face velocity v_f		NC 25		NC 30	NC 35	NC 40		NC 45		NC 50	
Width (mm)	Height (mm)	Volume Flow Rate V l/s									
400 ONE MODULE	150	240	300	370	445	480	535	575	625	660	695
	300	480	600	740	890	960	1070	1150	1250	1320	1390
	450	720	900	1120	1330	1440	1600	1730	1870	1980	2090
	600	960	1200	1490	1780	1920	2140	2300	2500	2640	2780
	750	1200	1500	1860	2220	2400	2670	2880	3120	3300	3480
	900	1440	1800	2230	2660	2880	3200	3460	3740	3960	4180
	1050	1680	2100	2600	3110	3360	3740	4030	4370	4620	4870
1200	1920	2400	2980	3550	3840	4270	4610	4990	5280	5570	
800 TWO MODULES	1440	2800	3600	4460	5330	5760	6410	6910	7490	7920	8350
	600	1920	2400	2980	3550	3840	4270	4610	4990	5280	5570
	750	2400	3000	3720	4440	4800	5340	5760	6240	6600	6960
	900	2880	3600	4460	5330	5760	6410	6910	7490	7920	8350
	1050	3660	4200	5210	6220	6720	7480	8060	8740	9240	9740
	1200	3840	4800	5950	7100	7680	8540	9220	9980	10560	11140
	1350	4320	5400	6700	7990	8640	9610	10370	11230	11880	12530
1500	4800	6000	7440	8880	9600	10680	11520	12480	13200	13920	
1200 THREE MODULES	600	2880	3600	4460	5330	5760	6410	6910	7490	7920	8350
	750	3600	4500	5580	6660	7200	8010	8640	9360	9900	10440
	900	4320	5400	6700	7990	8640	9610	10370	11230	11880	12530
	1050	5040	6300	7810	9320	10080	11210	12096	13100	13860	14620
	1200	5760	7200	8930	10660	11520	12820	13820	14980	15840	16700
	1350	6480	8100	10040	11990	12960	14420	15550	16850	17820	18790
	1500	7200	9000	11160	13320	14400	16020	17280	18720	19800	20880
1650	7920	9900	12280	14650	15840	17620	19010	20590	21780	22970	
1800	8640	10800	13390	15980	17280	19220	20740	22460	23760	25060	
1600 FOUR MODULES	900	5760	7200	8930	10660	11520	12820	13820	14980	15840	16700
	1050	6720	8400	10420	12430	13440	14950	16130	17470	18480	19490
	1200	7680	9600	11900	14210	15360	17090	18430	19970	21120	22270
	1350	8640	10800	13390	15980	17280	19220	20740	22460	23760	25060
	1500	9600	12000	14880	17760	19200	21360	23040	24960	26400	27840
	1650	10560	13200	16370	19540	21120	24500	25340	27460	29040	30630
	1800	11520	14400	17860	21310	23040	25630	27650	29950	31680	33410
1950	12480	15600	19340	23090	24960	27770	29950	32450	34320	36190	
2100	13440	16800	20830	24860	26880	29900	32260	34940	36960	38980	
2000 FIVE MODULES	1050	8400	10500	13020	15540	16800	18690	20160	21840	23100	24360
	1200	9600	12000	14880	17760	19200	21360	23040	24960	26400	27840
	1350	10800	13500	16740	19980	21600	24030	25920	28080	29700	31320
	1500	12000	15000	18600	22200	24000	26700	28800	31200	33000	34800
	1650	13200	16500	20460	24420	26400	29370	31680	34320	36300	38280
	1800	14400	18000	22320	26640	28800	32040	34560	37440	39600	41760
	1950	15600	19500	24180	28860	31200	34710	37440	40560	42900	45240
2100	16800	21000	26040	31080	33600	37380	40320	43680	46200	48720	
2250	18000	22500	27900	33300	36000	40050	43200	46800	49500	52200	
2400	19200	24000	29760	35520	38400	42720	46080	49920	52800	55680	
2400 SIX MODULES	1200	11520	14400	17860	21310	23040	25630	27650	29950	31680	33400
	1350	12960	16200	20090	23980	25920	28840	31100	33670	35640	37580
	1500	14400	18000	22320	26640	28800	32040	34560	37440	39600	41760
	1650	15840	19800	24550	29300	31680	35240	38020	41180	43560	45940
	1800	17280	21600	26780	31970	34560	38450	41470	44930	47520	50110
	1950	18720	23400	29020	34630	37440	41650	44930	48670	51480	54290
	2100	20160	25200	31250	37300	40320	44860	48380	52420	55440	58460
2400	23040	28800	35710	42620	46080	51260	55300	59900	63360	66820	

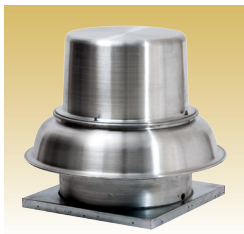
The pressure loss data above relates to a straight attenuator 1200mm long. The following factors are applicable to other lengths:

Length L in mm	600	900	1200	1500	1800	2100	2400
Δp factor	x 0.90	x0.95	0	x1.05	x1.10	x1.15	x1.20

For splitter bend attenuators add 65% to the pressure loss for the straight attenuator.

Energy Industrial Co. Offers a Wide Range of Products

General & Industrial Ventilation Products



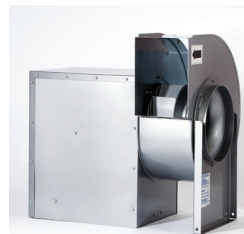
Domex
Centrifugal
Roof Exhausters



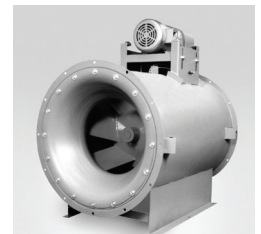
Fumex
Centrifugal Roof
Exhausters



Centrex
Centrifuga Inline Fan



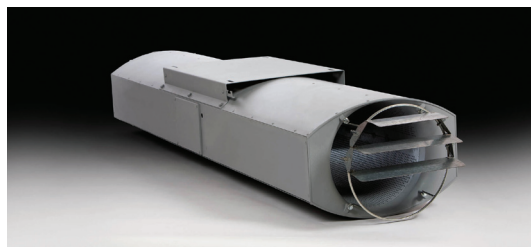
Dynamo
Centrifugal Blowers



ESI
Efficient Silen
Inline Fan



AVX
Axial Fan



Model JFUO
Jet Fans



Axial Fan
MA01 Series

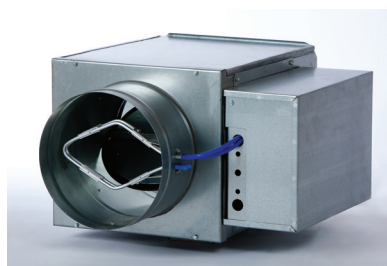


Axial Window Fan
MA01 Series

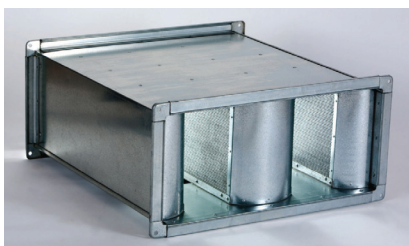
HVAC Products



Model BP
Variable Air Volume Box



Model TH
Variable Air Volume Box



Sound Attenuators



Sand Trap Louvers

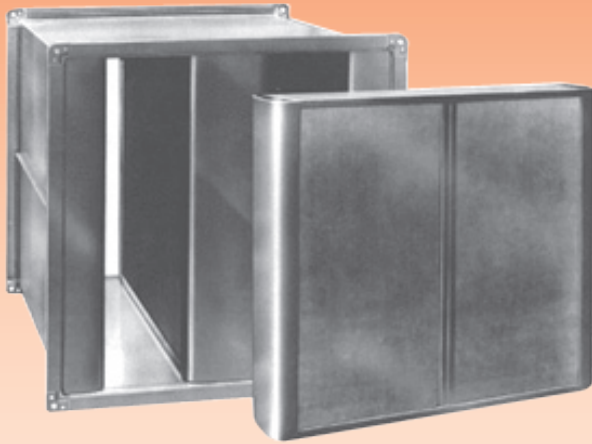
Control Panels



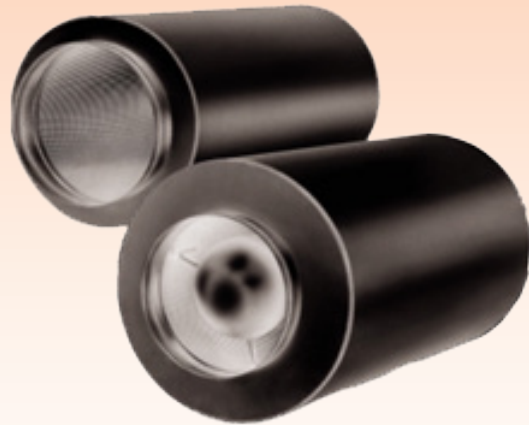
HVAC Sensors & Transmitters



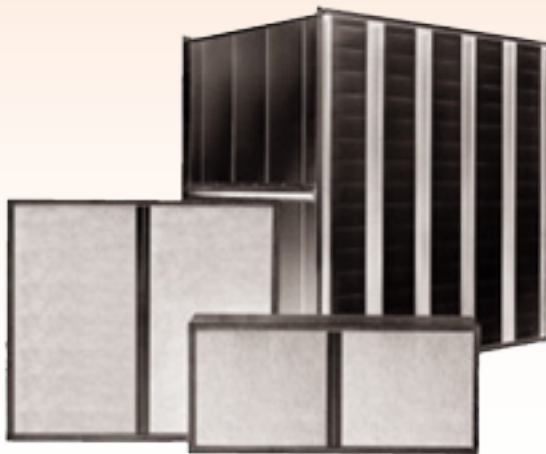
Energy Industrial Co. Manufacturers a Complete Line of Sound Attenuators



Attenuator With
Perforated Sheet Baffles



Cylindrical Attenuators
With or Without Pod



Attenuator With
Glass Tissue Facing Baffles



**ENERGY
INDUSTRIAL
COMPANY**

Energy Industrial Company L.L.C.
P.O. Box 24021, Sharjah, United Arab Emirates
T: 06-5343488 F: 06-5343710 E: energyco@energyind.ae



**ENERGY
INTERNATIONAL®**

Energy International Corporation
6850 N. Haggerty Rd., Canton, MI USA 41817
T: +734-354-2000 www.energyintl.com